

politecnico di milano

the athens programme

the art of building cities (POLI09)

ATLAS project

lorenzo degli esposti, with giacomo ardesio, stefano d'armento,
monia giannotta, claudia mainardi, giulia ragnoli, federico rosson, daniele zerbi

18.11.2013

5 conditions:

urban sprawl
shrinking city
tabula rasa
slum
gated community

5 counter-actions:

SPRAWLING
SHRINKING
TABULARAZING
SLUMMING
GATING

Sprawling Kortrijk Lille Area, France



Sprawling
Kortijk
Lille Area, France



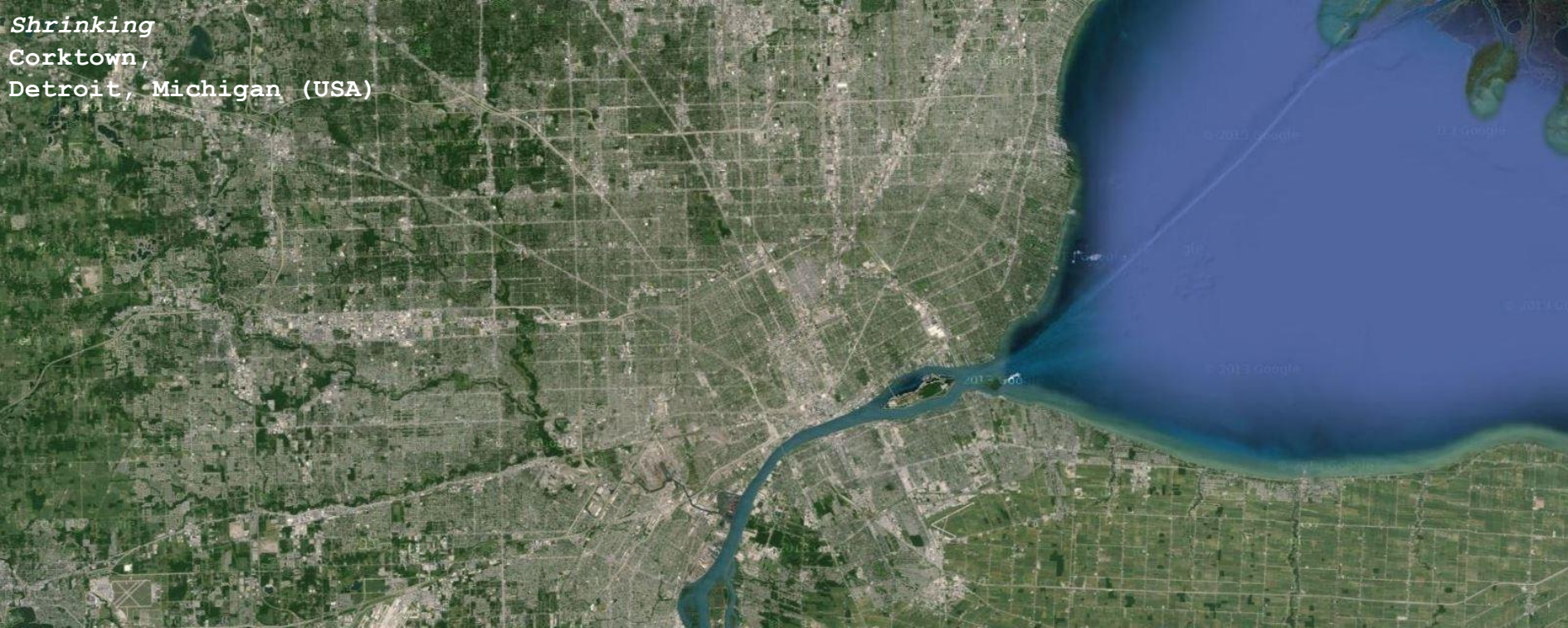
Sprawling
Kortrijk
Lille Area, France

A suburban context where the E17 and E403 motorways cross, in the North Western Metropolitan Area, a huge conurbation spreading from Lille, Bruxelles, Antwerpen up to Rotterdam/Amsterdam. This context presents heterogeneous urban conditions, such as infrastructures, detached and semi-detached houses, agricultural fields: the Generic City described by Rem Koolhaas.

Task: to propose urban forms/structure/objects which preserve the agricultural fields from being developed as generic city, and adding value to inhabitants' quality of life (against individualism).



Shrinking
Corktown,
Detroit, Michigan (USA)



Shrinking
Corktown,
Detroit, Michigan (USA)



Shrinking
Corktown,
Detroit, Michigan (USA)

Facts:

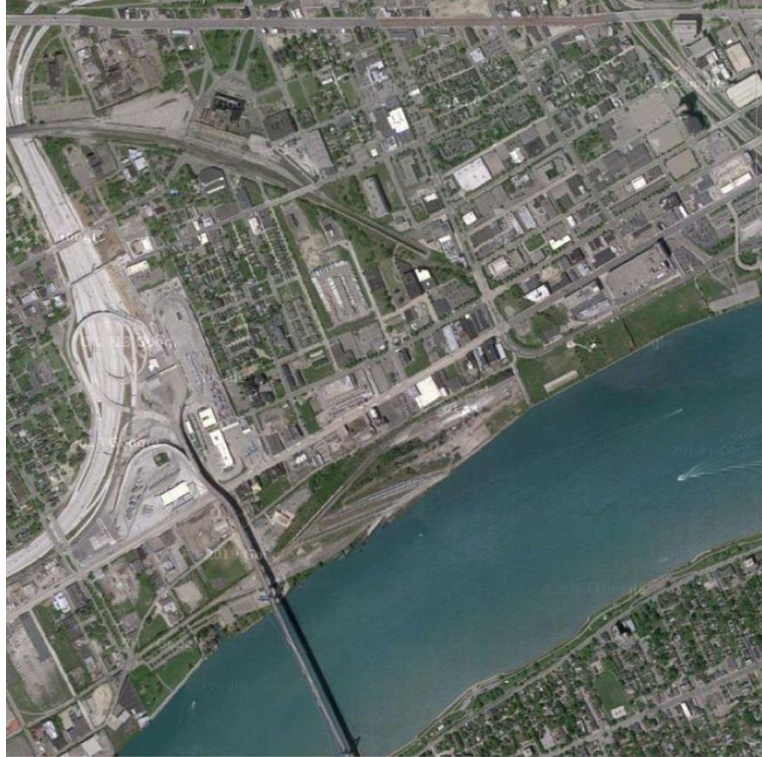
population from 1900 to 1950 = from under 285.700 to over 1.8 million

population from 1950 to 2000 = from over 1.8 million to 951.270

in 1998, 79% of the population of Detroit was African American

in 1998, 78% of the population in the surrounding suburbs was White

Shrinking
Corktown,
Detroit, Michigan (USA)



*Shrinking
Corktown,
Detroit, Michigan (USA)*



Shrinking
Corktown,
Detroit, Michigan (USA)

The oldest district of a city world-famous for its shrinkage urban process. It has a lot of vacancy blocks within a fragmented context of detached houses and ex industrial sheds, abandoned due to the economic/production crisis which invested the cities in the last decades. The district has been partially razed in the fifties for the Michigan Avenue lengthen, and is framed by the Ambassador Bridge, which links USA and Canada and is passed by the highest goods traffic in North America.

Task: to propose urban forms/structure/objects which revitalize this urban district (or parts of it), in spite of the shrinking process which affects the city.



TabulaRazing
Queenstown
Singapore, Singapore



TabulaRazing

Queenstown

Singapore, Singapore

Singapore represents the realization of the Modernist dream. Tabula rasa, zoning, residential districts entirely built by public housing slabs, to face the continuous demographic growth. There is no physical degradation, there is alienation. Queenstown has been the first new settlement. It will likely be the first to be replaced. Tabula rasa, again.

Task: to propose urban forms/structure/objects which break this vicious circle, providing this settlement with resilience and human scale and adding value to inhabitants' quality of life (against standardization).



TabulaRazing
Queenstown
Singapore, Singapore



Slumming
Dharavi
Mumbai, India

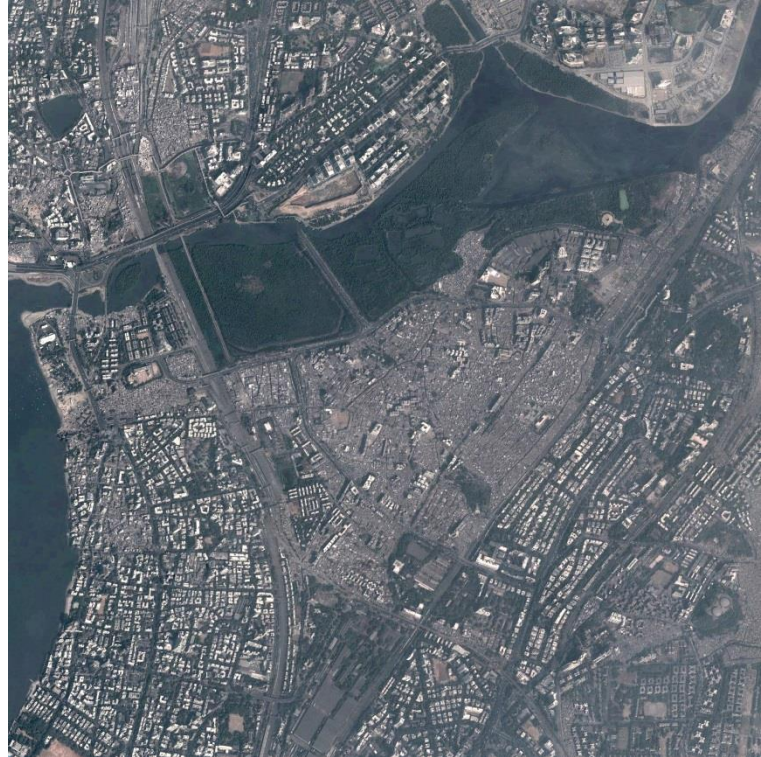


Slumming
Dharavi
Mumbai, India

The oldest and more productive slum in Mumbai City, main hub for the production of goods that are then exported all-over India and abroad.

Due to its central position, so close to the very business district of the city, it have been object of many projects of requalification (the process is ongoing) aiming to redevelop the area, with the false aim to improve the poor living conditions it offers.

Task: to propose urban forms/structure/objects, able to resist against developers' and part of administration's pressure and to add value to inhabitants' quality of life.



Slumming
Dharavi
Mumbai, India



Slumming
Dharavi
Mumbai, India



Gating
Westlake development
Cape Town, South Africa



Gating

Westlake development

Cape Town, South Africa

Mixed used area, where a gated community (Silvertree Estate, private development) and a poor village (Westlake Village, built by the same developers) substituted an informal settlement, and now coexist within a spatial proximity of 500 meters. The gated community, with its electrified walls and accesses controlled by gatehouse, is a part of the city completely forbidden for those citizens who do not live there or are not invited. A part of the city strictly separated from its urban context.

Task: to propose urban forms/structure/objects which open up the fence, having consensus both of the inner inhabitants and the outer ones.



Gating
Westlake development
Cape Town, South Africa

