

Arjun Appadurai, *Modernity At Large: Cultural Dimensions of Globalization*, *ethnoscapes*: migration and human "diaspora" / *mediascapes*: flux of symbols / *technoscapes*: flows of technologies / *finascapes*: flows of money / *ideoscapes*:



of the technologies of mass communication in the various socio-cultural realities and with the explosion of migration.

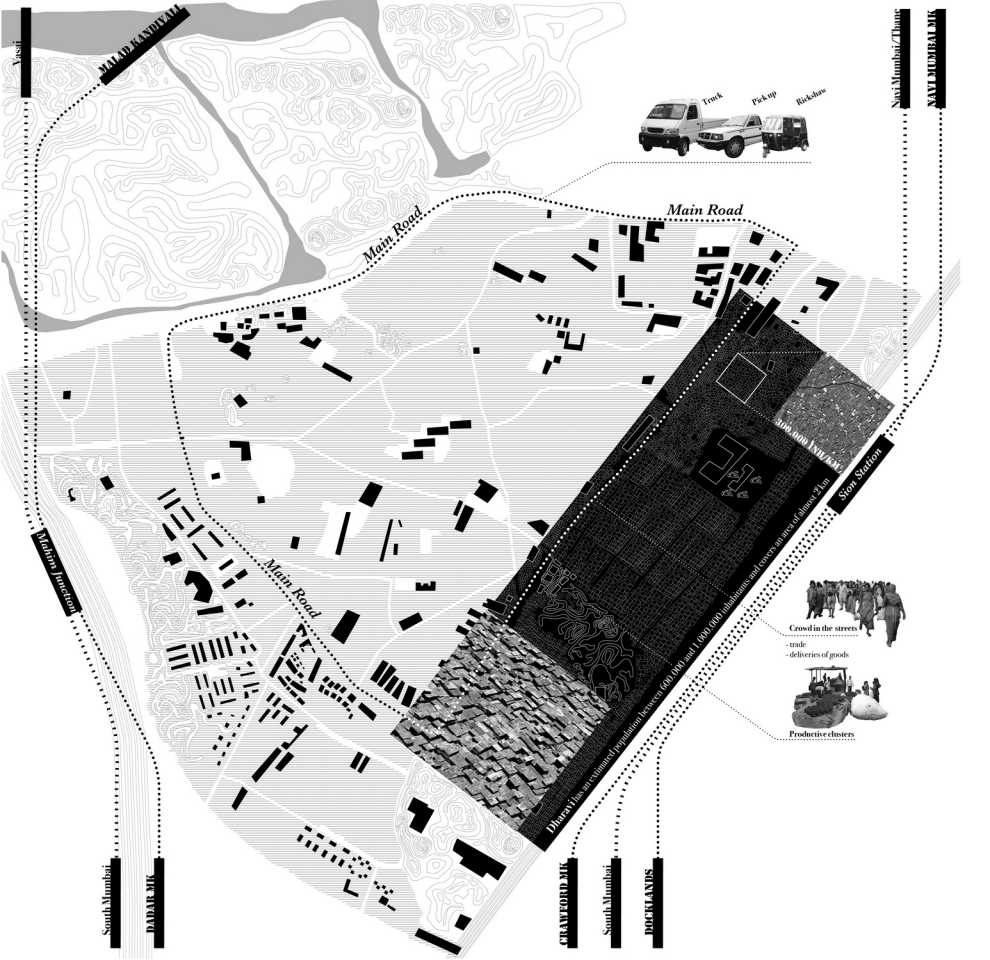
Appadurai defines "diffuse modernity" as the condition that has arisen with the tripping

Andrea Branzi, *Weak and Diffuse Modernity*

Dharaavi is a dum. Dharaavi is poor. In Dharaavi one million of people are living within two small squared kilometers. But their 1.000.000 people are 1.000.000 single human beings, with their life, their dreams, their hopes, and their fears. When no one is standing at them they come from nowhere and worked hard, they found any single solution to establish their everyday life. Among the poorest they became rich even expatriate overseas. But politicians only see the richness of the land they are finishing.

Dharaavi is born, where (s)he grew up, where (s)he was used to play, where (s)he gave the first kiss, where (s)he worked, where the parents died, where the children will born. For each couple of square meters you remove, you actually need to destroy a life.

Dharaavi is a dum. Dharaavi is poor. In Dharaavi one million of people are living within two small squared kilometers. But their 1.000.000 inhabitants. For each couple of square meters you remove, you need to destroy one person's house.



**MUMBAI**

South Mumbai  
DADAR MK

CRAWFORD MK  
South Mumbai  
POCKLANS

South Mumbai/Dharam  
MUMBAI MK



Main Road

Main Road

Main Road



Station

Dharam has an extremely high density of population, houses 600,000 individuals and has an average of 6000 sq. ft.

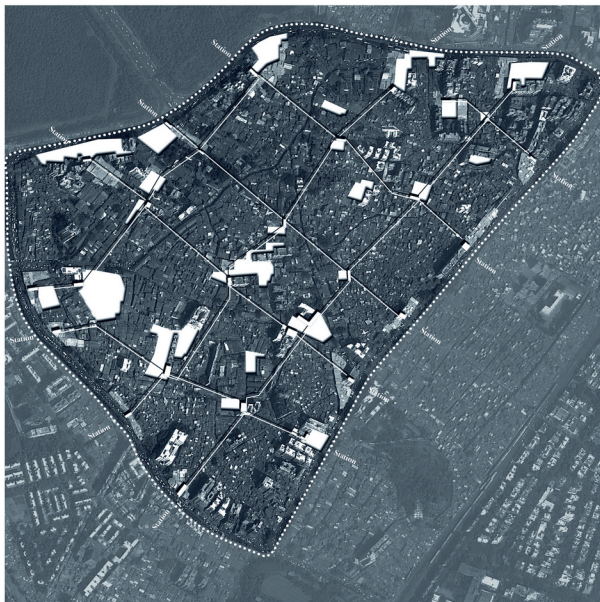


Crowded in the streets -  
make deliveries of goods

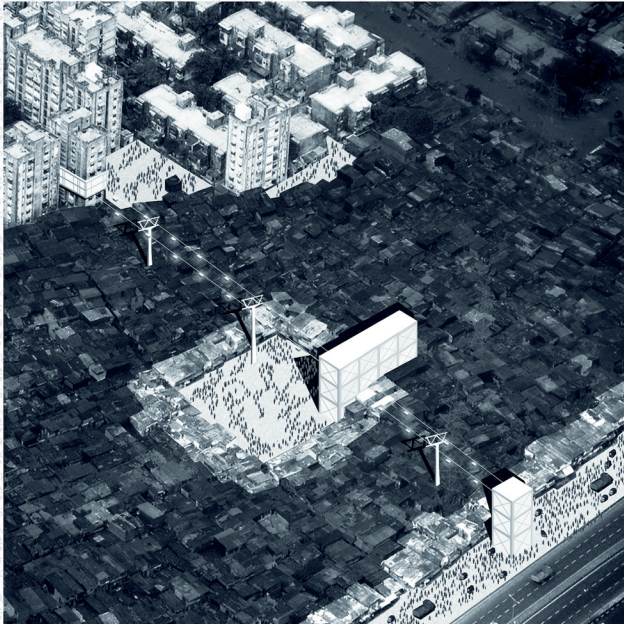


Productive clusters

0 100 200 300 400 500m







***aerial view***

*showing the localization of the fluxes related to the transportation of raw materials and goods in order to reduce the traffic of motor vehicles within the slum  
this forcing the existing narrow streets that will be crisscrossed just by the traffic related to trade activities  
the productive cluster will maintain the "village" dimension they already have*